

# SLATEST GOES VIRAL

Edition 22 –May 2020

## WELCOME!

In order to help support the community during the Coronavirus restrictions, Slate News will be produced more frequently and distributed online. We are therefore looking for articles for a June edition.

The deadline for the next edition is Saturday 30<sup>th</sup> May, please send items in in the normal manner:

Via e-mail to [rileyrob@btinternet.com](mailto:rileyrob@btinternet.com)

Into the Black Letter Box at the village hall

Or via Facebook @SlatestNews

**THANK YOU EVERYONE!**



Mickey and Minnie here in Ballachulish on one of their Friday visits for daily exercise!

## RANDOM ACTS OF KINDNESS

In 1995 a foundation called the Random Acts of Kindness (RAK) was established in Denver, Colorado. Its ethos was to inspire people to practice kindness and to pass it on to others.

In these strange and uncertain times that we are currently in, the Community Covid Resilience Group has (amongst many other great initiatives) re-introduced this same practice.

Over the last few weeks a number of members of our community and key workers such as bin operatives and posties have received little surprises like flowers, biscuits and savoury treats, while on a more regular basis other well deserved groups are in receipt of varying goodies. Even a musical tribute by our very own Paul Connolly made it as a RAK when he played a couple of gaelic tributes to a local lady who shall remain nameless, the tunes that he played on the accordion were *A Peigi a ghraidh* and *A ribhinn og* which translates as Peggy love and young more lovely!!!!

It works by someone/anyone nominating an individual or group for a RAK, sometimes a little bit of investigation is carried out as to their likes and then a volunteer drops it off. So if there is anyone that has been particularly kind to you as an individual or as a family, please feel free to nominate them, as often it really makes their day and yours.

Jo Watt



C

### Ballachulish Community Support Group

Someone who cares about you has nominated you to receive a Random Act of Kindness.

#### We can help - contact us

- for befriending calls, groceries & prescription collection, or to to nominate someone else for a Random Act of Kindness, call 01855 811999
- for our foodbank, call 01855 604311

[facebook.com/covid19balla/](https://facebook.com/covid19balla/)

SPREAD  
Kindness  
INSTEAD



## A RESILIENT COMMUNITY

We are now six weeks into Lockdown, and you have all proven just what an amazing, welcoming, and resilient community we live in. Of course, when you look back in history, perhaps it shouldn't be a surprise. If we go right back to 1692 we know how welcoming the MacDonalds of Glencoe were, perhaps too welcoming, and the following year the first Quarry was opened, starting a long period of new people coming to live and work in the area. Undoubtedly some proved unable to get on with the locals and moved on, but the majority must have settled in, as many of us can trace ancestry back to them.

Move forward to the 1900s and there was another influx of strangers to the local area with the construction and opening of the Smelter in Kinlochleven. True, many of them lived in the new company houses, but there were locals working at the smelter as well, making new friends and helping the new community grow.

Today it is a different sort of welcoming we are experiencing. Many of the people we are 'welcoming' have lived here a while, years perhaps, but our paths have never crossed. Now as we are confined to home, not seeing workmates or friends and relatives from further afield, we are finding new friends in the community, whether by passing in the street on our daily exercise, or by reaching out to offer help and support.

Even when they start to ease Lockdown, the new community bonds will need to survive as we find ourselves entering a very different world in the coming months. These new friendships and the new found sense of community will become the norm, reawakening a centuries old Highland tradition.

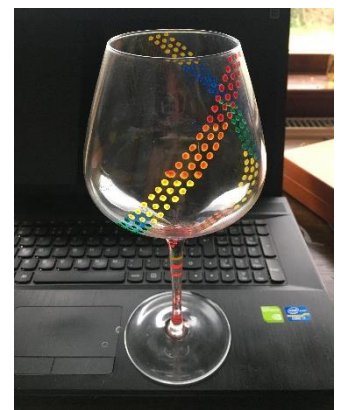
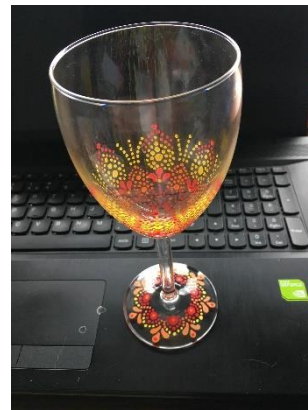
## THANKING OUR PROJECT MANAGERS

You may have noticed that last Friday Princess Elsa joined Mickey and Minnie on their daily exercise around the village. She came especially to pass on some thank you gifts to some members of the Community support group, including our Project Managers.



While there are many people who have been working extremely hard to ensure that everyone in our community gets the support they need, it is fair to say that the project managers have spent many long hours organising and co-ordinating the team to ensure we have a motivated and efficient response to attend to almost every eventuality that we can think of.

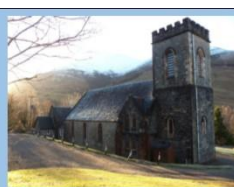
Thank you to them both from all of us.



*A small selection of some of the beautiful gifts produced by locals for the Random acts of Kindness*



**Duror and Glencoe:  
St Munda's  
Church of Scotland**



**We continue to worship during the Covid 19 crisis**

**Daily Readings and Prayers on our Facebook page**

**Short video Service every Sunday on Facebook and Youtube**

**'Zoom' worship at 10.30 every Sunday morning  
(email [astoddart@churchofscotland.org.uk](mailto:astoddart@churchofscotland.org.uk) for link)**

**Phone Rev Sandy if you want to chat (01631 740285)**

### **Roman Catholic Church**

each day Mass is celebrated by Bishop Brian McGee on LIVESTREAM. Details of this and other news from the Diocese on their facebook page

### **Scottish Episcopal Church**

Reverend Amanda has shared details of the news and activities from the West Highland region. Updated info is published weekly on facebook:

<https://www.facebook.com/WHRSEC/>

Alternatively call Revd Amanda on 811633 for details



## HOW WE CAN HELP YOU

### Ballachulish Community Support Group

Most of you will be aware of the services that we offer but if you are not on social media please keep this information to hand!

#### Everyday help:

- Prescription collections
- Local Grocery Shopping
- Dog walking
- Hot Meals
- Emergency DIY

#### Health & Wellbeing

- Befriending calls
- Community Online Quiz
- Community Zoom Account
- Random Acts of Kindness

#### A Note to Carers

If you are already supporting a friend, family member or neighbour we salute you, keep doing what you are doing. If you have to self isolate, can't continue your support for any reason or simply need a break, we are here to help. Just get in touch and discuss this with us.

#### Community Foodbank

See poster to the right.

#### Contact Us

Call 01855 811999 or message our Facebook page. Our community volunteers will be on call from 10am - 8pm.

#### The Important Stuff

Our volunteers will do their best to respond to you as quickly as they can, but responses may take time. Please bear with us.

Please never give financial or other personal data out to someone you don't know, especially over the telephone.

Please share this with those not on Facebook.

And lastly, we can't stress enough that we are here to help, but remember we are not an emergency response and volunteers are not medically qualified. All medical requests should be directed to the appropriate NHS number.

## VILLAGE HALL NEWS

In order to assist with the current Resilience work, Ballachulish Community Association SCIO have made some changes to the management structure (Trustees), as follows:

- Sheila MacLean has taken over as Chair
- Marjie Thornton has stepped down
- Ruth Sime has been co-opted on
- Deborah Fyfe has been appointed as project manager for the resilience work.

We will hold an AGM as soon as we can when things start to return to normal, at which point some changes to the constitution will be discussed, and all Trustees will stand down for re-election.

We would like to thank Marjie for her valued input over recent years, and also thank Ruth and Debs, along with the vast army of volunteers in the community support group for everything they are currently doing for our community.



C

## Ballachulish Community Food Bank

**What?**  
There is a larder full of food, collected by your community for use in this community so please do not struggle.

**Who is it for?**  
For anyone to receive or donate. No referral necessary, just call us or visit during opening hours.

**When?**  
Tuesdays 4pm-6pm  
Fridays 12pm-2pm  
Ballachulish Village Hall

**Can we help?**  
Yes! We can arrange a delivery for you or someone you are concerned about. If you can't make it to the hall you can call the confidential helpline.

**01855 604311**

Whatever your circumstances, we are here to help.  
Bring your bag and pop in to see us in the village hall.

Run by Ballachulish Community Support Group

SPREAD  
*Kindness*  
INSTEAD

Ballachulish Community Association SCIO, a Scottish charity No SC023308

# THE WITCHES GRAVE

Do you know where this is? Do you know what it is? Perhaps you know it by another name? What it isn't, is a Witches Grave in the way you might be thinking!

The inscription on the slab reads:

In April 1831 a cairn which stood on this spot was removed. The stone coffins within the inclosure were found underneath and have been left undisturbed.

Neither bones, ashes nor any remains of antiquity were discovered. To preserve the sanctity of the place, the surrounding wall was erected by Charles Stuart Esq of Ballachulish.



The wall is gone, but it can still be found behind Croft Road, Can you tell us any more?

When we posted this on Facebook, we got several interesting replies, many relating to Corrag the witch who once lived in the area. Barbara Fairweather, founder of Glencoe Folk Museum, wrote about her in several of her books, the fullest story coming from Highland Folklore:

*"While Corrag was considered to have been of outstanding badness, she was nevertheless to have been given a Christian burial on the Holy Island of Eilean Munda, the local burial island. It had always been a fact that, though the sea was stormy and rough, it always became calm for a funeral. On this occasion the sea remained stormy, gales raged, and it was impossible to take the boats out to the island. So Corrag was buried near the present road, through Tigh Phuirt. Before the new road of the early thirties came, and ran through the burial place, there used to be a mound on which the grass never grew long. This was Corrag's grave. There was considerable local opposition to the obliteration of the grave, but in spite of this no mark was left, nor were the remains taken care of."*

It is also locally told that when the current A82 was built in the 1970s, there were repeated problems with rock falls and the like in the area where Corrag's grave was supposed to be between the arch and Tigh Phuirt, and that these were only solved with the installation of the gabion baskets which are still there today.

Another tale relating to Corrag was remembered by Iona McNab:

*"Ballachulish Bridge was left unfinished by one bolt as Corrag said that any crossing completed in the narrows of Loch Leven would be cursed. So the missing bolt prevented the curse happening. Little is known of her ... wonder who she was??"*

Reading this, we can't help wondering whether the bearing failure that delayed the opening of the bridge was anything to do with Corrag!

However, as fascinating as these tales are, there seems to be little connection to the slate at the back of Croft Road. Iona again remembers:

*"Wasn't this something to do with Vikings? They invaded Ballachulish in the 9th or 10th Century and it was known as the 'Battle of Laroach'. This is some kind of memorial. Perhaps the bones of locals who perished in the battle."*

The discovery of stone coffins within the 'inclosure' perhaps suggests that the cairns that once stood where Croft Road now lies were indeed much later than the more famous cairns such as those in Kilmartin Glen. These date back another three to five thousand years or more! Old maps show three cairns in the croft, one roughly where the slate now stands, and the other two somewhere between nos 8 and 10, although the accuracy of comparing old and modern maps makes it difficult to pinpoint precise locations.



Ballachulish Rainbow  
playgroup wishes all our  
attendees well and is looking  
forward to when we can return to normal

Contact Alice Wilson - 07709100618



**Claymore Limited**

Tyndrum Road Glencoe

Tel 01855 811308

Tools, Hardware, Oils &  
Lubricants, Groceries

**Now Licensed**

**for**

**Off Sales**





# THE HILLS WILL WAIT

For all of us living here the mountains are part and parcel of daily life. They surround, shelter, inspire and draw our eyes upwards, year in year out.

On any homeward journey that first sighting of the Buachaille makes the heart beat that wee bit faster, for it marks the boundary of the place we know as home.

Our mountains lend a sense of place and belonging. Often, in going up a mountain, we can escape into ourselves for a while. So to find ourselves left standing at the bottom due to understandable current restrictions can leave us all feeling a bit lost.



For many, just looking at the hills is enough, others love to wander freely over the tops, yet the mountains are also a workplace for a number of locals.

Here at Girls on Hills we're no different. Our programme of events for the year was due to start in earnest in late March delivering some exciting new courses and old favourites. Like so many this was not to be.

Lockdown at first felt like standing on the start line of an ultra race, with no idea of the distance ahead, how long it would take or even where the finish line might be. Scary and uncertain. With events cancelled / postponed that meant no income either. More worrying was the ban on stravaiging over our beloved hills.

But as the great Scottish writer Nan Shepherd observed in her classic book *The Living Mountain* "To aim for the highest point is not the only way to climb a mountain". A good lesson for us all. From runners obsessed with clock watching to the ordinary person rushing through the day without taking time just "to be".

If lockdown has taught us one thing here at Girls on Hills then it has been to slow down, be more mindful even in our running. The watch has gone, lower level local routes have



been a joy to explore (although some forest routes have led to nothing but a dead end) and while not skipping over the high ridges the mental and physical benefits of getting out in nature still hold true.

The advice from all of us at Girls on Hills is to keep getting out on your run, cycle, walk. Try to find a new route or even head out at a different time of day to add a fresh aspect.

Like old friends the hills will be waiting to welcome us back.

*Nancy Kennedy, Girls on Hills*





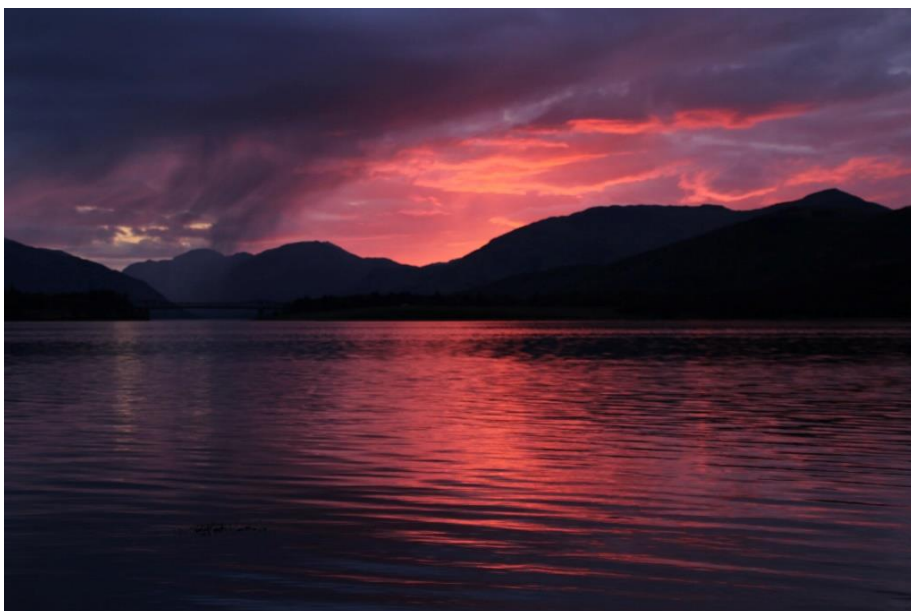
## A PERFECT EVENING?

It was one of those evenings when the water in the loch was almost still, gentle ripples crisscrossing as the tide imperceptibly rose, creating strange reflections. The water carried and magnified every sound, the nightly honking of the geese as they took off somewhere out of sight, the rumble of a car on the far shore, its headlights glinting between the trees like jewels. A mallard drifted lazily across the water, occasionally raising its tail as it bobbed for food, before finally taking off and skimming low across the surface, perhaps spooked by the seal which momentarily lifted its eyes above the surface, but was gone before the camera could be adjusted.

And all of this was set against the magnificent backdrop of the Ardgour Mountains, playing host to the daily light show of sunset. At length the patient watcher was rewarded as the pink glow of sunset illuminated the heavens and reflected across the water. For once, a scudding shower added to the scene, making a spectacular end to the day.

## HELP FROM EWEN'S ROOM

Being under lockdown is making it even harder for lots of folk to feel OK. We've already spoken to several people who are finding this an incredibly tough time. So if that's you, please do feel you can phone for a chat. Or text. Or leave a message.



## BEST TREE IN BALLACHULISH

We have had a request for nominations for your favourite blossom tree in the village. We have some spectacular trees to enjoy just now, whether down by the village hall, along



the river banks or in people's gardens. While we are specifically asking for Blossom Trees, perhaps they are not your thing and you find the magnificent Sycamore next to Kinlochlovin, or a particular conifer in the forest far more pleasing?

Whatever your favourites, please post them on facebook using the tag #besttreeinballa.

If you are not on Facebook, ask a friend or neighbour to post on your behalf.


**Ringling the Ewen's Room**  
**Helpline is FREE on**  
**0800 689 3317**

**You can also text us on**  
**07537 431637**

**Our volunteers are available from**  
**5pm to 10pm Monday to Friday**  
**12 noon to 10pm on**  
**Saturday and Sunday**

  
**Promoting Wellbeing**  
**and Mental Health**

**tools & tackle**  
**... & the great outdoors**  
garden plants, compost,  
pots, tools, and more



**Lockdown Opening**  
**10am - 12 midday (Mon -Sat)**  
check facebook for opening after lockdown

Old Post Office, Ballachulish, PH49 4JB  
off A82 near Glencoe Tel 01855 811111  
toolsandtackle.co.uk



## COMMUNITY CLEAN — UPS DURING COVID

As part of their daily exercise recommendations some members of our community have chosen to use that time doing clean ups not just around the village but on the A82 along to the Ballachulish Roundabout.

Some of the findings from this anti social behaviour have been absolutely horrific and a real risk to health, and it is clear that over a period of many years the wall at the big layby past Craigrannoch has, acted as the perfect disguise for all manners of fly tipping.

Despite the work that goes on in our schools at a very early age it is evident that over time the message gets lost and despite every community's effort littering still goes on. Regular clean ups are key and, in our community, and others around us – Glencoe, Kinlochleven, Onich – the findings are the same. While small groups and individuals are taking responsibility for their own area, be it a street, or steps near where they live or cutting back the shrubbery that nearly removes an eye when they are walking past, it is just the minority sadly as opposed to the majority. Notwithstanding, I hasten to add, there are some members of our community who would really like to help but aren't able to.

While I hear some of you say "oh that's the council's job", the sad reality is that with ongoing budget cuts, we as a community need to be proactive rather than reactive and build on the work already going on in a more consistent way. Countries that have participated in studies as to the reason why this behaviour exists have found that the main outcomes came down to two key areas and these were

- 1) no or not enough litter receptacles and
- 2) it was already littered and dirty anyway.

Kuwait and India scored quite highly with the amount of waste littered while in Japan NOT littering is part of their culture and they have relatively few bins on their streets. In areas where there are vending machines and street sellers, the food will be eaten right there and then and either the waste is handed back to the vendor or disposed of in the bin that IS available next to the machine. In Japan they simply do not walk and eat!!!!

However while there may be very few bins on their streets you would find that in a Japanese home there are many bins for recycling and with recycling 77% of its plastic, almost double Britain's and well above the USA's meagre 20%, it is apparent that they are doing something very right.

One of their towns with a population of just over 1700 is already on track to become a zero waste town by 2020 with over 80% of non organic waste not entering landfill... they do however separate into 40 different categories.

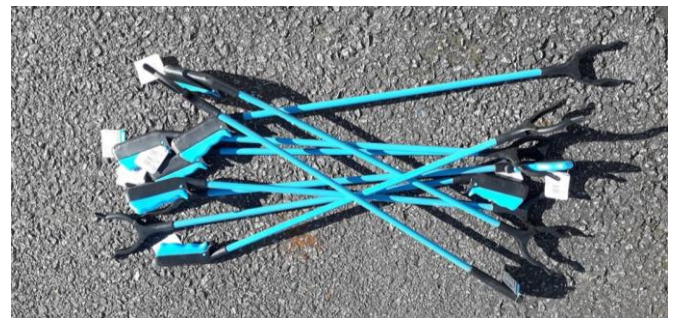
While we have no chance of reaching that standard we can do better, fines and penalties don't work, slogans might, 'Leithers don't Litter', Flingin's Mingin, 'Too Posh to Pick', 'Please feed the Balla Barrels', 'Dont Mess with Balla'.

It would be interesting to hear the community views given the amount of work that has been done recently (and in the past) and is still ongoing. What, going forward, can be done realistically to be part of the solution and not the problem.

As has already been said, thank you to everyone who has already been out around the village trimming, pruning, litter picking and otherwise improving our surroundings. Now more than ever this is important, as seeing a clean and tidy village will help keep people's spirits up in these difficult times.

Ballachulish Community Association now have some litter grabbers if anyone is planning to go out in the coming days. Thanks to Dave at the Claymore for finally tracking some down! We are selling them at £5 each including a couple of bin bags and any profits go to the resilience team.

If you would like one please put the money and your address into the black letterbox at the hall or message us and we aim to deliver next day. Thank you.



Morgan Smith: From the quarry and that's just 30 mins - loads of rubbish still needing collected. Mostly full of empty wine bottles, buckfast bottles, beer bottles and cans



Some of the rubbish collected by Angus MacInnes at the layby near Craigrannoch:



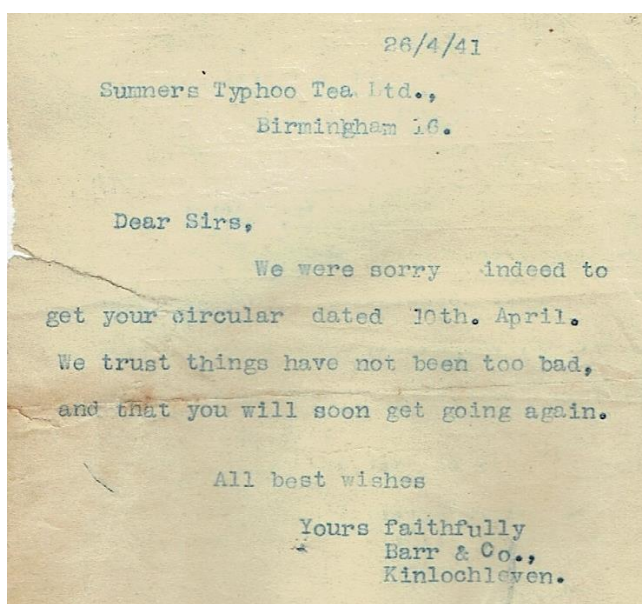
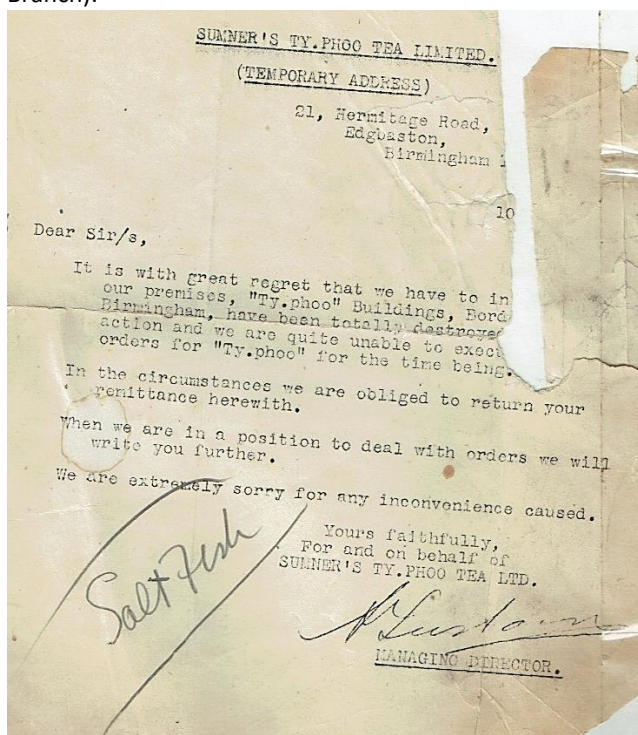


## BALLACHULISH IN THE WAR

Friday 8<sup>th</sup> May marks the 75<sup>th</sup> anniversary of VE day – the day Victory in Europe was declared at the end of World War 2. The government had planned a bank holiday and a whole host of celebratory and commemorative events, but obviously most of these are now not happening.

Although there are very few of us old enough to remember the wartime, there are some interesting comparisons to think about – people suddenly doing jobs very different to their normal work; massive community spirit; food shortages; reduction in services and restrictions on travel, although for many of these the circumstances are very different, and hopefully not so long lasting.

Glencoe Museum have hunted through their archives and found a couple of interesting letters from 1941 between Typhoo Tea in Birmingham and Barrs Stores (Kinlochleven Branch):



The letter from Typhoo reads:

"It is with great regret that we have to inform you that our premises "Typhoo" Buildings, Bordesley Street, Birmingham, have been totally destroyed by enemy action and we are quite unable to execute any orders for "Typhoo" for the time being."

The reply from Barrs Stores:

"We were sorry indeed to get your circular dated 10th April. We trust things have not been too bad, and that you will soon get going again."

We should also remember that at the time Ballachulish still didn't have electricity. So, next time you make yourself a cup of tea, be grateful that it is 2020 and not 1941!

## RESILIENCE FUNDING

We are delighted to announce that we have secured funding from two sources, namely the Supporting Communities Fund and Lund Trust.

**Supporting Communities Fund** - Ballachulish Community Association SCIO welcomes news that it has secured funding from the Scottish Government, via Highlands and Islands Enterprise (HIE), to support the work of Ballachulish Community Support Group during the COVID-19 crisis, from the Supporting Communities Fund.



Highlands and Islands Enterprise  
Iomairt na Gàidhealtachd 's nan Eilean



Highlands and Islands Enterprise is distributing the Supporting Communities Fund in the Highlands and Islands, on behalf of the Scottish Government, for all eligible community anchor organisations, who play an active role in providing services within communities across the region. Through this funding we are being supported to deliver our community response to the COVID-19 emergency.

**Lund Trust** - the donation from Lund Trust, a charitable fund of Lisbet Rausing and Peter Baldwin, will also be vital in supporting the efforts of the Ballachulish Community Support Group as we work to improve the wellbeing and morale of our community.



LUND

A charitable fund of Lisbet Rausing and Peter Baldwin

**AA WHYTE & SONS**

**Plumbing & Heating**

**Registered Gas & Oil Installers**



For all your  
domestic & commercial  
plumbing & heating  
requirements



T: 01855811438/347 M: 07855813166

E: aawhyte@tiscali.co.uk

A: Ar Dachaidh, West Laroach, Ballachulish, PH49 4JJ



# RHODODENDRON PONTICUM

As spring progresses into summer one certainty in the west of Scotland is our forests and estates turn deep pink to light purple with the flowers of Rhododendron Ponticum. There is no doubt it is a pretty bush in flower but it is classed as a non-native invasive species. That means it is up to everyone to ensure that it does not spread.

Rest assured I am only talking about Rhododendron Ponticum. That lovely wee rhododendron bush you treasure, bought from the garden centre and look forward to flowering every year is not included. You only need to look at my riverbank garden to see the diversity of the genus, with around 1000 species and many thousands of cultivars but only R. ponticum is invasive. This species has given the whole genus a bad name. Government bodies such as SNH have not helped by not specifying, but talking about "rhododendron eradication".

How do you recognise Rhododendron Ponticum from other rhododendrons? In flower it is characterised by the rounded trusses of deep pink to light purple flowers that often have a darker blotch in the centre. Out of flower it can be recognised by dark green shiny flat leaves about six inches long by two inches wide. The previous year's stem is often a reddish colour and could be as long as a foot. It regularly suckers from its roots forming a dense impenetrable thicket. It also seeds itself around prolifically.

So what can we do about it? If you have it in your garden, remove it. If it is fairly small it will pull out easily. They are shallow rooted. For larger bushes, I have found the best way is to cut it to the ground and immediately coat the stump with glyphosate weedkiller. I use a stronger solution to what would normally kill weeds, about 1 part glyphosate to 4 parts water. If you do not want to use chemicals then you have to lever out the root. If you just leave it, ten stems will bud from what you leave.

Having removed it you then have a nice spot to plant something more ornamental and non-invasive. If you are in doubt, send me a picture to [john.roy2@btopenworld](mailto:john.roy2@btopenworld) or I can come and advise when safe to do so.

*John Roy*



Above: Rhododendron ponticum stem showing the flattened leaves and red stem from previous growth.

Below: Rhododendron 'Cunningham's White', a hybrid with R. ponticum but non-invasive. Note the more rounded leaves and green stem.



## Co-op Opening Hours

Please be aware that the Co-op is currently closing at 8pm. They are also giving priority to vulnerable people from 8-9am each morning, except 10-11 am on Sundays.

## RBS Operating Hours

The RBS mobile van is not visiting the village at present, however the branch in Fort William is open from 10-1pm Monday to Friday.

## SOUTH LOCHABER BOWMEN

Archery Club at the Leven  
Centre, Kinlochleven

**Although we are currently not meeting, please keep an eye on our facebook page for re-activated meeting times and dates as soon as we can.**



Archery sessions are run by qualified coaches in both Field and Target Archery.

Find us on facebook: [www.facebook.com/SLBowmen](https://www.facebook.com/SLBowmen).





## 4<sup>th</sup> Lochaber Scout Group

Beavers 6-8 years,  
Cubs 8-10½ years,  
Scouts 10-14 years,

Whilst we are unable to meet, the Scouts have been set a number of challenges. Here is the third one, which you may like to tackle yourselves!

### Spring 2020 – Challenge 3

Here's a fun challenge which can be completed inside or out. We have to be honest, it is a challenge laid down by Rob's brother – can you build a better bridge than his amazing Lego construction:



He assures us it is symmetrical but that his flat is too small! Rob reckons his bridge has a bigger span, and it took minutes not days to build:



These are some of the fabulous creations the Scouts dreamed up:

*Arron Callander bridged a stream*



*Cameron MacLeod's Humpback Bridge*



*Melissa MacLachlan's Zipwire - not really a bridge, but...*



*And Sarah Whyte created this fantastic Lego bridge!*



	<b>REFRIGERATION &amp; AIR CONDITIONING</b> Sales, Service & Installation	<b>On Call 24/7</b>
	<b>Air Source Heat Pumps</b>	<b>Tel: 01 855 81 1641</b>
<b>Low Energy Heating Systems Supplied &amp; Installed</b>	<b>Mobiles:</b> <b>07970 824252</b> <b>07970 824506</b>	<b>www.ks-refrigeration.co.uk</b>



## THREE GENERATIONS OF THE A82 THROUGH BALLACHULISH

On the 16<sup>th</sup> of May 1922 the A82 was created. At the time it wasn't seen as a very important matter, roads were numbered and classified internally by the Ministry of Transport and Scottish Office to assist with maintenance funding. It took many years for the Government to realise the full value of road numbering, although map makers got the idea much quicker. Roads were classified based on traffic counts and route numbers allocated based on flows at junctions. Today the A82 is possibly carrying even less traffic than back in 1922, but then things are a bit odd right now!

When it was originally classified, the A82 crossed Rannoch Moor on the old road (much of it is now the West Highland Way), built over a century earlier by Thomas Telford, and ran down the Clachaig Road through Glencoe Village, then on along through Tigh Phuirst. It approached Ballachulish by passing under both arches, then following Loanfern up to the bridge, before doubling back down West Laroch and so out past the West Quarry. Continuing west it ran alongside the railway past St Johns and down to the ferry. Can you imagine today's (normal) summer traffic queueing round the village to get over the old bridge?



This bridge was built back in 1785/6 as part of a drove road through Glencoe. Prior to that, the main road north had crossed the Devils Staircase! The Drove Road also saw the old Brig o'Coe built, and a similar bridge stood near St Johns church.

So what of the Three Generations? Well, we will get there! In 1922 only the High Road was complete through to Kinlochleven, so this was numbered as the A829, which ran along the back lane below the hospital before Invercoe Bridge was built in c1926. The A829 was subsequently extended along the Low Road in c1924 when it was finished. In 1935, many of the road numbers were changed or re-routed, as the Government finally realised what a benefit road numbering was to the growing numbers of motorists. As a result, the A82 was re-routed around Loch Leven, and the old Ballachulish section became the A828, including the short section to the north of the ferry.

The first Ballachulish Bypass was started before the war, when the road was built across the end of the Jubilee Park

(partially destroying the Girl Guides Hut in the process). However, work was halted, and nothing more was done until about 1950 when the Jubilee wall was rebuilt. The following year the bridge over the River Laroch was built, and so Ballachulish was 'bypassed' with the new road we now know as Albert Road. This was, of course, still the A828.



The next big change came with the opening of the Ballachulish Bridge in 1975. The records are not conclusive, but it can be presumed that the bridge saw the A82 re-routed back on to its original course (more or less) through Ballachulish very quickly, if not immediately, and so the A82 ran along Albert Road. This was only a short term solution, however, with work progressing in fits and starts on upgrading the whole route along Loch Leven from the Roundabout to Glencoe Crossroads, work which was concluded in about 1980. This then saw the A82 re-routed once more, onto the new Ballachulish Bypass, as it is today.



## SLATEST IS NOW ON FACEBOOK

To help keep us all in touch during these interesting times, Slatest News has joined Facebook. @SlatestNews

If you have any memories, or snippets of information to share, please get in touch on facebook @SlatestNews or via e-mail – [rileyrob@btinternet.com](mailto:rileyrob@btinternet.com)

Whilst we are obviously reluctant to deliver this edition to homes, we are aware that many of the most vulnerable in our community are not online. We will therefore be able to print copies for delivery direct or to friends / relatives / neighbours on request, as above.



## EASTER BUNNIES



Kids around the village woke up on Easter Sunday to find wonderful Easter Treats on their doorsteps. They had been encouraged to put pictures of eggs in their window and were rewarded by the school eco committee, while 4<sup>th</sup> Lochaber Scouts were out delivering to Beavers, Cubs and Scouts – present, past and hopefully future members! Thanks to everyone involved!

*Happy Easter*



From 4<sup>th</sup>  
Lochaber  
Scouts



## A VERY SPECIAL VISITOR

Our community has been amazingly lucky to be visited by Mickey Mouse three weeks running. He came all the way from Disneyland to take his daily exercise and say goodnight to all of the boys and girls (young and old) on Friday 17<sup>th</sup>, and then the following weeks he brought Minnie with him too. They had a great time, and hope to come back soon.





## UPON REFLECTION



We are so lucky living here, with plenty of paths to walk on, even through lockdown. If we aren't able to get out, then we have beautiful views to look at through the windows or from our gardens. We have a reasonable shop in the Co-op within walking distance of any homes in the village (part of the daily exercise?) and an excellent emergency plan for those needing it.

Coming down the quarry path & looking around I was reminded of the line from the hymn "were the whole realm of nature mine, that were an offering far too small" and I thought at this point the whole realm of nature is mine with the hills, loch and birds singing in the trees and the smell of the bright yellow gorse. But I can't offer it to God as it's already his and only ours on loan to look after. (A pity some still seem to need to litter it with their rubbish.)

So, as we remember those that live in towns & high rise flats and our friends and relatives that we can't visit at present and, of course, all the NHS and care workers, shop staff, bin-men, postmen and those that keep our lives going as normal, upon reflection let us be thankful for our wonderful surroundings.



*Hilary Malpas*

## BALLACHULISH CAMMANACHD — A CENTURY AGO

With thanks to Ian MacPhee, Slate News will now be bringing you the latest Shinty News, from the 1920s!

### Oban Times Report 8th May 1920

#### **BALLACHULISH 6 - INVERARAY 2**

These teams met at Mossfield Park, Oban, on Saturday last, under the auspices of the Argyllshire Junior Camanachd Association, to play off the final tie for the Bullough County Cup. Great Interest was taken in the match and there was a large attendance.

Play during the first half was well contested and there was little to choose between the teams. The half-time score of two goals each was a fair index of the run of the game. In the course of the second half Ballachulish gradually gained the upper hand and although Inveraray were occasionally dangerous, they never looked like scoring. Ballachulish put on another four goals and ran out winners by six goals to two. In the pavilion the cup was handed over to the Ballachulish team by Provost Skinner, Oban.

A great ovation awaited the Ballachulish Junior Shinty Club at the Railway Station on their arrival from Oban after their victory of 6 goals to 2 against Inveraray for the Bullough County Cup. Their victory was very popular. The youthful Captain was carried shoulder high out of the Station amidst great cheering. The red colours of the Club were much in evidence among supporters of the Club.

---

### Oban Times Report 22<sup>nd</sup> May 1920

**BALLACHULISH – SHINTY** – In order to encourage the ancient Celtic game of Shinty in this locality and stimulate the game in a practical manner, the Shinty Committee have made arrangements for a local tournament to be held in the Beresford Jubilee Park at which four clubs of an average of players of fifteen men each, including reserves have entered. The matches are to be played every Saturday evening on the football league principal – 2 points for a win and 1 point for a draw. Badges, etc, are to be given to the winners. To be able to raise some 60 players after two strenuous campaigns for the Senior and Junior Cups shows a healthy vitality and resourcefulness of the locality under the guidance and initiative of the Committee. It is expected that members of the public will give their support to this healthy form of recreation in order to have good teams for next year's Shinty competitions.



## A YEAR IN THE LIFE — 1992

Throughout April we have been posting photos from the Year in the Life project in 1992 on the Facebook page. As you would imagine, these have produced a range of comments and memories, with photos of the shops proving very popular, so here are a few of them:



Above, the original Co-op which sat opposite Fern Villa at the top of the Jubilee, and below the wee shop at the bridge.



## RAINFALL IN GLENACHULISH IN MARCH AND APRIL

The total rainfall recorded in March was 381mm. Following on from two very wet months March began by being equally wet but it dried up in the latter half of the month, however it was still considerably higher than my 4 year average of 226mm. In 2019 we had 318mm.



April was much drier with only 61 mm. The bulk of this rain fell at the beginning of the month and it has been a very dry month, good for the lambing season. The 4 year average for April is 122mm but we had only 48 mm in 2019.

Rainfall for the year to date is 1,623 mm almost double (186%) my 4 year average of 873mm.



On a sunnier note, the highest temperature recorded was 20 degrees C on the 23<sup>rd</sup> April.



Barrs Stores, with the unforgettable and much missed Christine MacMillan outside, above and inside, below, back in 1992 when it was a Spar.



Ballachulish Community Council, Ballachulish Community Company and Ballachulish Community Association SCIO (SC023308) have worked together to produce this newsletter. Ballachulish Community Association SCIO, Ballachulish Village Hall, East Pier Road, Ballachulish PH49 4LE